

# Instructions for Use: HemeScreen<sup>®</sup> Cytopenia Plated Reagents


**RUO** For research use only. Not for use in diagnostic procedures.

**Please read the Instructions for Use thoroughly before you use this product and keep it for future reference.**

## Contents

MANUFACTURER .....	2
HEMESCREEN® HRM REAGENTS RUO .....	2
INTENDED USE.....	2
INDICATIONS FOR USE.....	2
BIOLOGICAL REFERENCE OF CYTOPENIA MUTATIONS .....	2
PRINCIPLES OF HIGH RESOLUTION MELTING .....	3
TRACEABILITY OF HEMESCREEN® CYTOPENIA HRM REAGENTS CONTROLS .....	4
HEMESCREEN® REAGENT SET PREPARATION.....	4
OVERVIEW OF SAMPLES USING HEMESCREEN® HRM REAGENTS .....	4
COMPONENTS AND STORAGE CONDITIONS .....	5
SAFETY INFORMATION, WARNINGS, AND PRECAUTIONS.....	5
MATERIALS REQUIRED BUT NOT PROVIDED .....	6
HEMESCREEN® PREPARATION AND PROCEDURE.....	6
1.1. Recommendations Before You Start: .....	7
1.2. DNA Dilutions: .....	7
1.3. HemeScreen® Layout Setup: .....	7
1.4. Preparation of Plate and Addition of DNA: .....	8
1.5. Amplification and Melt Curve/Dissociation on QuantStudio™ 3: .....	8
QUALITY CONTROL OF THE AMPLIFICATION DATA .....	11
2.1. Normal characteristics of HemeScreen® Amplification.....	11
HEMESCREEN® CYTOPENIA ANALYSIS: .....	13
3.1 Analysis.....	13
3.2 Confirmatory Procedure: .....	19
TROUBLESHOOTING .....	20
Plate Errors:.....	20
Technical Errors:.....	20
EXPLANATION OF SYMBOLS AND WARNINGS .....	20
LITERATURE REFERENCES .....	21
TECHNICAL SUPPORT/QUESTIONS.....	21

## Manufacturer

Manufacturer		Precipio, Inc. 4 Science Park, New Haven, CT 06511, USA Phone: 1-203-787-7888
--------------	---	---

## HemeScreen® HRM Reagents RUO

The Research Use Only (RUO) reagents are supplied as ready to use. This Instructions for Use is available as a download on the Precipio website, <https://www.precipiodx.com/reagentrental.html>.

## Intended Use

**For professional use only.** Precipio's HemeScreen® offerings are Research Use Only (RUO) assays that screen for clinically actionable somatic mutations in targets of interest related to myeloproliferative disorders and haematological cancers. The reagents are designed to be used in a clinical diagnostic laboratory by suitably trained personnel testing DNA extracted from whole blood or bone marrow using a PCR-based method and High Resolution Melt (HRM) Analysis. Samples are run in replicate analysis to confirm the presence of a mutation; however, if the exact mutation sequence is required, a sequencing method such as Sanger Sequencing is needed. In addition, if inconsistent results are observed, Sanger Sequencing or another comparable mutation detection technology can be used to confirm the exact mutation type.

## Indications for Use

HemeScreen® HRM Reagents RUO screen for mutations relevant to Myeloproliferative Disorders (MPD) or Myelodysplastic Syndrome (MDS). The HemeScreen® HRM Reagents indicate the presence of a potential mutation within a sample but does not confirm the identity of the mutation. To confirm the precise mutation detected, further analysis, such as TaqMan™ detection assays or DNA sequencing, is required.

Although the results of analysis with HemeScreen® HRM Reagents will indicate the mutation status of the sample, results obtained using the HemeScreen® HRM Reagents should not be used in making clinical decisions.

## Biological Reference of Cytopenia Mutations

The HemeScreen® Cytopenia HRM Reagents have been designed to PCR amplify the relevant regions in *WT1*, *ASXL1*, *RUNX1*, *DNMT3A*, and *SF3B1* genes for subsequent HRM analysis.

Background of the genes chosen for this panel:

- *WT1* (Wilms' Tumor 1) can lead to higher relapse rate and poor prognosis in patients with acute myeloid leukemia (AML). *WT1* mutations may be observed in 6-15% of AML cases, often with patients who have *FLT3*-ITD and/or *CEBPA* mutations. Induction chemotherapy resistance has been associated with a *WT1* mutation. *WT1* mutations can be used as a tool in determining MRD.
- *ASXL1* (additional sex combs like 1) mutations can be seen in myelodysplastic syndrome (MDS), myeloproliferative neoplasms (MPN), chronic myelomonocytic leukemia (CMML), refractory cytopenia, persistent cytopenia with early detection of MDS and AML. When present, the mutation is associated with poor prognosis and more aggressive disease. *ASXL1* mutation occurs in CMML often (~45% of cases), and is rarely seen in PV. *ASXL1* is often associated with *RUNX1* cytogenetic abnormalities in both MDS and AML, as well as *CEBPA* in AML. Poor prognosis and aggressive disease is often paired with *ASXL1* mutation.
- *RUNX1* (runt-related transcription factor 1) mutation is commonly seen in chemotherapy-related MDS, but is also seen in MDS, AML, as well as AML after MDS. Recently *RUNX1* mutation has been discovered in CML patients. *RUNX1* mutation is also associated with abnormal cytogenetics, including monosomy 7, trisomy 21 and trisomy 13. *RUNX1* and monosomy 7 can lead to rapid progression of AML when the patient is being treated for MDS. *CEBPA* and *NPM1* are not commonly associated with mutated *RUNX1*. Whereas, *FLT3* mutation is more commonly associated with *RUNX1* mutation, approximately 30% in *FLT3*-ITD

## Instructions for Use

cases and 11% in *FLT3*-TKD cases. *RUNX1* mutation has a poor prognosis regardless of cytogenetic abnormalities and should be considered in the diagnosis of AML.

- *DNMT3A* (DNA methyltransferase 3A) mutation can be seen in AML and MDS. Patients who have MDS with *DNMT3A* mutation have an increased chance of disease transformation to AML. *DNMT3A* mutation has poor prognosis for AML patients, and can be used to monitor treatment. *DNMT3A* mutation is often seen with *IDH2* and *SF3B1* mutations.
- *SF3B1* (splicing factor 3b subunit 1) mutation identifies a condition characterized by ring sideroblasts (RS), ineffective erythropoiesis, and indolent clinical course. A large body of evidence supports recognition of *SF3B1*-mutant MDS as a distinct nosologic entity.

The mutations covered in this reagent set are as follows:

<b>WT1 Exon 7:</b>	<b>RUNX1 Exon 4:</b>	<b>SF3B1 Exon 14:</b>
c.1110dup; p.V371Cfs*14	c.167T>C; p.L56S	c.1866G>T; p.E622D
c.1142C>A; p.S381*	c.319C>T; p.R107C	c.1866G>C; p.E622D
<b>WT1 Exon 9:</b>	<b>RUNX1 Exon 5:</b>	c.1873C>T; p.R625C
c.1384C>T; p.R462W	c.422C>A; p.S141*	c.1874G>T; p.R625L
c.1385G>A; p.R462Q	c.485G>A; p.R162K	c.1984C>G; p.H662D
c.1385G>C; p.R462P	c.496C>T; p.R166*	c.1986C>G; p.H662Q
c.1390G>A; p.D464N	<b>RUNX1 Exon 6:</b>	c.1986C>A; p.H662Q
<b>ASXL1 Exon 13 codon 591:</b>	c.592G>A; p.D198N	c.1996A>C; p.K666Q
c.1772dup; p.Y591*	c.602G>A; p.R201Q	c.1996A>G; p.K666E
<b>ASXL1 Exon 13 codon 635:</b>	c.610C>T; p.R204*	c.1997A>C; p.K666T
c.1900_1922del; p.E635Rfs*15	<b>RUNX1 Exon 8:</b>	c.1997A>G; p.K666R
c.1934dup; p.G646Wfs*12	c.958C>T; p.R320*	c.1998G>T; p.K666N
<b>ASXL1 Exon 13 codon 693:</b>	<b>DNMT3A exon 23:</b>	c.1998G>C; p.K666N
c.2077C>T; p.R693*	c.2645G>A; p.R882H	<b>SF3B1 Exon 15:</b>
<b>ASXL1 Exon 13 codon 808:</b>	c.2644C>T; p.R882C	c.2098A>G; p.K700E
c.2423del; p.P808Lfs*10	c.2644C>A; p.R882S	<b>SF3B1 Exon 16:</b>
<b>ASXL1 Exon 13 codon 1102:</b>	c.2645G>C; p.R882P	c.2225G>A; p.G742D
c.3306G>T; p.E1102D	c.2644C>G; p.R882G	
	c.2645G>T; p.R882L	

The HemeScreen® Cytopenia HRM Reagents do not provide quantitative results. The reagents provide a means to screen samples for relevant mutations in *WT1*, *ASXL1*, *RUNX1*, *DNMT3A* and *SF3B1* as related to persistent cytopenia with early detection of MDS.

## Principles of High Resolution Melting

High Resolution Melting (HRM) is a mutation detection methodology, which allows the user to determine if the PCR fragment contains a variant or not based upon the dissociation of double-stranded DNA in the presence of an intercalating dye as the temperature increases. As the temperature increases, changes in the fluorescence due to the amplicon dissociation are monitored real-time. It is expected that fragments containing a variant will have slightly different fluorescence profiles than that of Wild-Type DNA which allows for the entire amplicon to be screened for mutations.

Since this is a scanning technique and does not identify an exact mutation, any variant present in the PCR product may differentiate from the Wild-Type DNA, thus leading to a mutation positive result. HRM is a highly sensitive assay, factors such as pipetting errors, cytosine deamination and polymerase errors may give rise to these false positives.

## Traceability of HemeScreen® Cytopenia HRM Reagents Controls

The “Wild-Type Control” and “Mutant Control” sequences were constructed by synthesis and cloning for *WT1* Exons 7 and 9, *ASXL1* Exon 13 codon 591, *ASXL1* Exon 13 codon 635, *ASXL1* Exon 13 codon 693, *ASXL1* Exon 13 codon 808, *ASXL1* Exon 13 codon 1102, *RUNX1* Exons 4, 5, 6, and 8, *DNMT3A* Exon 23, and *SF3B1* exon 14, 15 and 16 using the NCBI Reference Sequences:

NM_015338.6	<i>ASXL1</i>
NM_175629.2	<i>DNMT3A</i>
NM_001754.5	<i>RUNX1</i>
NM_012433.4	<i>SF3B1</i>
NM_024426.6	<i>WT1</i>

A restriction enzyme site was added 5’ and 3’ of each cloning region in order to linearize the plasmid which reduces the possibility of contamination. DNA sequence was confirmed using Sanger sequencing with the primers supplied in this reagent set.

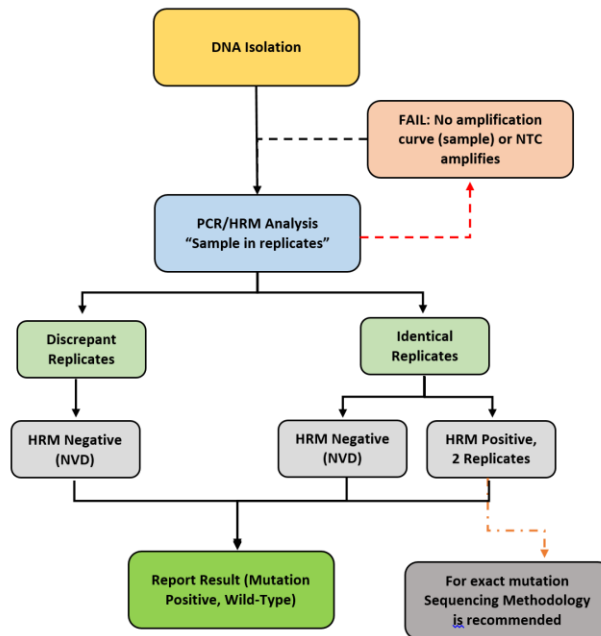
## HemeScreen® Reagent Set Preparation

All reagents supplied with the HemeScreen® reagent set are ready to use. The plates will need to be thawed and spun in a microcentrifuge before use; check details in [HemeScreen® Preparation and Procedure](#) section below.

## Overview of Samples using HemeScreen® HRM Reagents

In general, processing of samples should be carried out from start to finish as described in these Instructions for Use. If processing of a sample has to be stopped before completion of all steps, the DNA should be stored (see [Primary Sample Collection, Handling and Storage](#) section below). The analysis The HemeScreen® HRM Reagents should only be used in the context of the workflow indicated below.

**Figure 1: HemeScreen® HRM Reagents Workflow**



### Explanation to Figure 1:

1. Isolate the DNA from peripheral blood or bone marrow using standard laboratory procedures.
2. Perform HemeScreen® Cytopenia then review the amplification curves to ensure consistent amplification across all samples and controls
  - a. If the control amplification curves are normal, proceed to HRM analysis.
    - i. If an individual sample does not amplify, in either replicate, repeat HemeScreen® Cytopenia for that sample.
    - ii. If the NTC shows amplification and the CT value is <34, compare the HRM  $T_M$  to the target  $T_M$ . If the peak melt temperature is the same as the target melting temperature, the reaction is contaminated and cannot be used for further analysis. Repeat HemeScreen® Cytopenia for the amplicon (all samples and controls) in which the NTC failed.
    - iii. If the Wild-Type Control does not amplify, the PCR reaction failed. Repeat HemeScreen® Cytopenia for the amplicon (all samples and controls) in which the Wild-Type failed.
  - b. If sample amplification is acceptable, HRM analysis will result in either:
    - i. A normal melt profile indicating Wild-Type, that is, HRM Negative (NVD); or
    - ii. An abnormal melt profile, indicating the presence of a variant. Follow-up HRM with a sequencing methodology to verify the exact mutation or obtain the mutation allelic frequency.
    - iii. If one of the replicates is not aligned with the positive control melt profile (melting temperature and curve peak) while the other replicate is aligned with the positive control melt profile (melting temperature and curve peak) the same is HRM negative.
    - iv. If the sample melting curve is peaking after the positive control peak in more than 0.5°C then it is considered NVD.

## Components and Storage Conditions

Each HemeScreen® Cytopenia plated reagent set contains plated reactions for 3 samples in duplicate and includes a Wild-Type, Mutant, and No Template control (NTC).

Plated reagents should be stored in the dark between -20 °C ± 2 °C in a constant temperature freezer until use. Note the expiry date of each reagent set received. Do not use after the expiry date has elapsed.

## Safety Information, Warnings, and Precautions

1. None of the reagents present a hazard to health in the quantities supplied. The SDS is available on our website, <https://www.precipiodx.com>.
2. There are no substances of animal or human origin that present a risk of infection in the supplied reagents.
3. These reagents should be used only by those persons who have been trained in the appropriate laboratory techniques.
4. Biological sample handling:
  - a. All samples to be treated as hazardous and infectious, when handling whole blood or bone marrow samples always wear a suitable lab coat, disposable gloves, and protective glasses. Use a biohazard container for DNA extraction waste.
  - b. Biological waste during the DNA extraction process should be disposed in accordance with national/local regulations relating to biohazard waste disposal.
  - c. Liquid waste must be considered infectious and be handled and discarded according to national/local regulations relating to biohazard waste disposal.
5. Sample or Reagent Spillage
  - a. Avoid contact with skin and eyes.
  - b. Wear appropriate protective clothing, gloves, facemask and glasses.
  - c. Absorb the material using gauze.
  - d. Clean the surface with 10% (v/v) sodium hypochlorite (10% bleach) and leave the surface wet for 30 min to one hr.
  - e. Wash thoroughly with water. Place the waste in suitable container and dispose of in accordance with national/local regulations relating to Bio-hazard waste disposal.
    - i. If the spilt liquid contains infectious agents, clean the affected area first with laboratory detergent and water followed with 1% (v/v) sodium hypochlorite.

## Materials Required but Not Provided

### Reagents:

1. MeltDoctor™ HRM Calibration Plate, Fast 96-well (Thermo Fisher Scientific Catalog Number 4425618)
2. TE buffer (Fisher Healthcare Catalog Number AAJ75793AE)
3. Nuclease free water (Fisher Healthcare Catalog Number AM9932)
4. DNA Extraction Kit and associated reagents

### Consumables/Supplies:

1. MicroAmp™ Optical Adhesive Film (Fisher Healthcare Catalog Number 4360954)
2. Pipettes
3. Pipette tips
4. Vortex
5. 1.5 mL Microcentrifuge tubes
6. Microfuge capable of holding 1.5 mL tubes
7. Microfuge capable of holding 96-well plates

### Instrument:

1. QuantStudio™ 3 Real Time PCR System with the 96-well, 0.1 mL block or equivalent.

**NOTE: This assay has been optimized using the QuantStudio™ 3 Real-Time PCR System (96-well, 0.1 mL). Alternative platforms may require further optimization per the platform specifications.**

## Primary Sample Collection, Handling and Storage

### Sample type:

- This assay can be utilized with peripheral blood and bone marrow.

### DNA Extraction:

- The quality of the assay and the consistency of HRM is highly dependent of the quality of the analyte. All samples and controls should be extracted with the same high quality DNA extraction method and protocol to avoid any variations due to reagents/buffers. Each extraction should have an  $A_{260}/A_{280}$  ratio of 1.8 - 2.0 and an  $A_{260}/A_{230}$  ratio of 2.0 - 2.2 and must be diluted to the same starting concentration (10 ng/ $\mu$ L) with the same dilution buffer. Ensure sample-to-sample uniformity. Lastly, any additional control DNA to be analyzed should be of the same quality and quantity as the sample DNA.

### DNA Storage

- Extracted DNA can be stored at 4 °C for short term storage and use (up to 4 weeks) or at -20 °C for long term storage (up to 3 years).

## HemeScreen® Preparation and Procedure

**NOTE:** For background information and general HRM workflows, refer to the Manual, Applied Biosystems High-Resolution Melt Experiment Getting Started Guide (Publication Number MAN0014394).

**NOTE:** The QuantStudio™ field technician will create all calibration files necessary during installation. In general, calibration files are good for two years. The field technician will not complete the MeltDoctor HRM calibration plate. This plate must be ran on the instrument prior to running HemeScreen®.

## Instructions for Use

### 1.1. Recommendations Before You Start:

- 1.1.1. The following procedures are optional but highly recommended prior to PCR setup:
  - 1.1.1.1. Turn on UV light inside hood or a UV crosslinker (15 min).
  - 1.1.1.2. UV crosslink empty 1.5 mL tubes and sufficient TE buffer for DNA dilution (10 min).
  - 1.1.1.3. Make sure all work areas are prepared for analysis of low-level mutations. This includes correct use of the PCR Workstation, dedicated pipettes, tips, 10% bleach solution and/or DNA Away™ solutions.

### 1.2. DNA Dilutions:

- 1.2.1. Prepare the calculations to dilute all extracted sample DNA to 10 ng/μL in TE buffer.
  - 1.2.1.1. Please use the provided excel spreadsheet to prepare the working concentration of each sample.
  - 1.2.1.2. Enter each sample name, concentration, and  $A_{260/280}$  and  $A_{260/230}$  ratio into the Excel sheet.
  - 1.2.1.3. The dilution calculations will populate automatically.
    - 1.2.1.3.1. If the original sample is < 10 ng/μL, please re-extract the sample. For best performance, a consistent DNA input is required.
    - 1.2.1.3.2. For pipetting convenience, prepare 90 μL provided enough DNA is available. The total volume may be adjusted to fit the extracted DNA elution amount.

**NOTE:** It is not recommended to pipet less than 1 μL of stock DNA.

- 1.2.2. Print the excel sheet containing the plate layout and dilution calculation sheet.
- 1.2.3. Label individual 1.5 mL tubes with sample name or case number.
- 1.2.4. Add the required volume of TE buffer to the 1.5 mL tubes.
  - 1.2.4.1. Prior to adding the required volume of stock DNA to the TE buffer, ensure the sample has been adequately vortexed and spun down. Add the required volume of stock DNA and pipette mix.
  - 1.2.4.2. Close the tubes, vortex, and centrifuge for 5 sec.

**NOTE:** Please make sure you are using different tips while adding stock DNA to 1.5 mL tubes.

- 1.2.5. Measure all dilutions to ensure the concentration is 10 ng/μL. All dilutions should not be more than +/- 1 μL from each other. If there are any outliers, a new dilution must be created and re-measured.

### 1.3. HemeScreen® Layout Setup:

- 1.3.1. The HemeScreen® Cytopenia plated reagents are arranged for PCR and analysis of 3 samples in duplicate.



## Instructions for Use

**Figure 2: HemeScreen® Cytopenia Plate layout.**

	1	2	3	4	5	6	7	8	9	10	11	12
A	ASXL1 c591-c635_Sample 1	ASXL1 c1102_Sample 1	ASXL1 c808-c693_Sample 1	DNMT3A Exon 23_Sample 1	RUNX1 Exon 4_Sample 1	RUNX1 Exon 8_Sample 1	RUNX1 Exon 5 and Exon 6_Sample 1	SF3B1 c666-c700_Sample 1	SF3B1 c742-c622_Sample 1	WT1 Exon 9 and Exon 7_Sample 1		
B	ASXL1 c591-c635_Sample 1	ASXL1 c1102_Sample 1	ASXL1 c808-c693_Sample 1	DNMT3A Exon 23_Sample 1	RUNX1 Exon 4_Sample 1	RUNX1 Exon 8_Sample 1	RUNX1 Exon 5 and Exon 6_Sample 1	SF3B1 c666-c700_Sample 1	SF3B1 c742-c622_Sample 1	WT1 Exon 9 and Exon 7_Sample 1		
C	ASXL1 c591-c635_Sample 2	ASXL1 c1102_Sample 2	ASXL1 c808-c693_Sample 2	DNMT3A Exon 23_Sample 2	RUNX1 Exon 4_Sample 2	RUNX1 Exon 8_Sample 2	RUNX1 Exon 5 and Exon 6_Sample 2	SF3B1 c666-c700_Sample 2	SF3B1 c742-c622_Sample 2	WT1 Exon 9 and Exon 7_Sample 2		
D	ASXL1 c591-c635_Sample 2	ASXL1 c1102_Sample 2	ASXL1 c808-c693_Sample 2	DNMT3A Exon 23_Sample 2	RUNX1 Exon 4_Sample 2	RUNX1 Exon 8_Sample 2	RUNX1 Exon 5 and Exon 6_Sample 2	SF3B1 c666-c700_Sample 2	SF3B1 c742-c622_Sample 2	WT1 Exon 9 and Exon 7_Sample 2	ASXL1 c591-c635_NTC	ASXL1 c1102_NTC
E	ASXL1 c591-c635_Sample 3	ASXL1 c1102_Sample 3	ASXL1 c808-c693_Sample 3	DNMT3A Exon 23_Sample 3	RUNX1 Exon 4_Sample 3	RUNX1 Exon 8_Sample 3	RUNX1 Exon 5 and Exon 6_Sample 3	SF3B1 c666-c700_Sample 3	SF3B1 c742-c622_Sample 3	WT1 Exon 9 and Exon 7_Sample 3	ASXL1 c808-c693_NTC	DNMT3A Exon 23_NTC
F	ASXL1 c591-c635_Sample 3	ASXL1 c1102_Sample 3	ASXL1 c808-c693_Sample 3	DNMT3A Exon 23_Sample 3	RUNX1 Exon 4_Sample 3	RUNX1 Exon 8_Sample 3	RUNX1 Exon 5 and Exon 6_Sample 3	SF3B1 c666-c700_Sample 3	SF3B1 c742-c622_Sample 3	WT1 Exon 9 and Exon 7_Sample 3	RUNX1 Exon 4_NTC	RUNX1 Exon 8_NTC
G	ASXL1 c591-c635_MUT	ASXL1 c1102_MUT	ASXL1 c808-c693_MUT	DNMT3A Exon 23_MUT	RUNX1 Exon 4_MUT	RUNX1 Exon 8_MUT	RUNX1 Exon 5 and Exon 6_MUT	SF3B1 c666-c700_MUT	SF3B1 c742-c622_MUT	WT1 Exon 9 and Exon 7_MUT	RUNX1 Exon 5 and Exon 6_NTC	SF3B1 c666-c700_NTC
H	ASXL1 c591-c635_WT	ASXL1 c1102_WT	ASXL1 c808-c693_WT	DNMT3A Exon 23_WT	RUNX1 Exon 4_WT	RUNX1 Exon 8_WT	RUNX1 Exon 5 and Exon 6_WT	SF3B1 c666-c700_WT	SF3B1 c742-c622_WT	WT1 Exon 9 and Exon 7_WT	SF3B1 c742-c622_NTC	WT1 Exon 9 and Exon 7_NTC

1.3.2. HemeScreen® Cytopenia Plate Layout Templates (xlsx) are saved to the Precipio Storage Cloud. The template can facilitate plate organization and can generate QuantStudio plate setup files. Please make sure you pick the correct template for the correct SKU/sample number.

1.3.2.1. Enter the sample names in the “Layout Maker” section.” The 96-well plate view and the QuantStudio Template will automatically update.

1.3.2.2. Click to the save button on the upper right hand corner.

1.3.2.2.1. A .txt file will be automatically saved in the Templates folder located inside the POL folder.

## 1.4. Preparation of Plate and Addition of DNA:

1.4.1. Remove the plate from the freezer and thaw the plate in its packaging.

1.4.1.1. Thaw the plate for a minimum of 20 min. The closer to room temperature the better.

1.4.1.2. If possible protect from light.

1.4.2. Remove the plate from the packaging.

1.4.3. Centrifuge the plate for 2 min at 600 to 1000 x g.

1.4.3.1. Confirm that the liquid in each well is at the bottom of the well and the volume is consistent well to well. If not, centrifuge the plate again for another 2 min.

1.4.3.2. Keep the bottom of the plate clean. Fluids or other debris on the bottom of the plate may dirty the sample block and cause abnormal fluorescent signals.

1.4.4. Ensure that the plate orientation is correct. Well A1 should be at the top left.

1.4.5. Being very careful, **SLOWLY** remove the plate septa from the HemeScreen® Cytopenia Plate.

1.4.6. To appropriate wells, add 2 µL of diluted DNA sample. Ensure to adequately vortex and spin down all DNA dilutions prior to use.

1.4.6.1. Pipette-mix to ensure sample is well mixed into reaction mixture.

1.4.6.2. Controls are already added to the appropriate wells (Wild-Type, Mutant and No Template Controls).

**DO NOT ADD** any DNA or water/low TE to these wells.

1.4.7. Place MicroAmp Optical Film over plate and seal. Ensure the plate is appropriately sealed on all edges.


1.4.8. Centrifuge the plate for 1 min to eliminate any air bubbles from the solution. Verify the optical film is adequately sealed, and verify well volumes before placing the plate on the instrument.

## 1.5. Amplification and Melt Curve/Dissociation on QuantStudio™ 3:

1.5.1. Open the QuantStudio™ v1.5.1 software.

1.5.1.1. Create a new experiment > From Template (see **Figures 3 & 4**).

1.5.1.1.1. Alternatively, select FILE, NEW EXPERIMENT, FROM TEMPLATE then browse to the “HemeScreen® QuantStudio™ 3 Template.edt” file from the POL folder (see **Figures 3 & 4**).

- 1.5.1.1.2. This .edt file provided by Precipio has the thermal cycler profile already programmed under Experimental Method. See **Figure 5** for a screenshot of the entire thermal cycler program.
  - 1.5.1.1.2.1. Do not change or alter any of the parameters of the thermal cycler program.
  - 1.5.1.1.3. See **Table 1** for the thermal cycler protocol.
- 1.5.1.2. Input the experiment name under the properties tab.
  - 1.5.1.2.1. Recommended to format as DD\_MM\_YY\_PlateBarcode\_tech initials
  - 1.5.1.2.2. Confirm the following run options:
    - 1.5.1.2.2.1. Instrument type: QuantStudio™ 3 System
    - 1.5.1.2.2.2. Block type: 96-Well 0.1-mL Block
    - 1.5.1.2.2.3. Experiment type: Standard Curve
    - 1.5.1.2.2.4. Chemistry: Other
    - 1.5.1.2.2.5. Run mode: Standard
- 1.5.1.3. Click **Plate** in the **top row to open Assign Targets and Samples** tab.
- 1.5.1.4. Select **File -> Import Plate Setup...** to import the HRM Plate Layout Excel file made in earlier step (see **Figure 6**). The samples, plate layout, and target(s) are now assigned.
- 1.5.1.5. Confirm all sample wells have been assigned a sample name and target. If there are empty wells, you can confirm there is no sample name or Target assigned to the well.
  - 1.5.1.5.1. Click Advanced Setup. In the 96-well Plate Layout view, select the wells you would like to exclude from analysis and then uncheck the sample name and target from the advanced setup pane on the left side.
- 1.5.1.6. Touch  to eject the instrument drawer.
  - 1.5.1.6.1. Place the plate in the drawer so well A1 of the plate is in the top left corner.

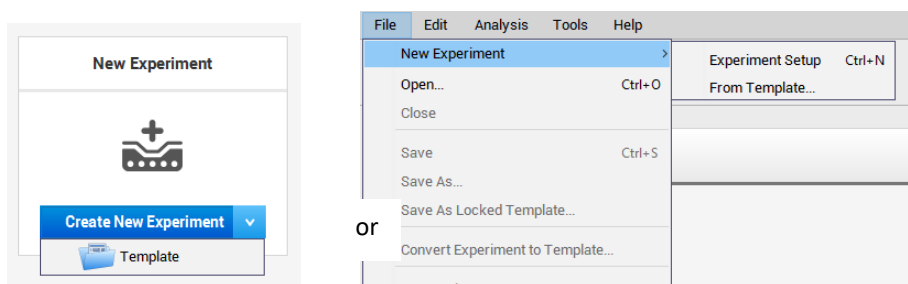
**NOTE:** Before clicking start run, make sure your instrument is connected to your laptop. You should see your instrument serial number in the drop-down menu.

- 1.5.1.7. Click on **START RUN** followed by the specific instrument serial number to start the run (see **Figure 7**).
- 1.5.1.8. The software will ask you to save the run. Please save the run in your designated HemeScreen® POL folder (i.e. \Egnyte\shared\HemeScreen POL\YOUR SITE).
- 1.5.1.9. The run automatically starts after saving the file.

**NOTE:** QuantStudio™ automatically saves the run file on the instrument, if you failed to save the run on the computer you can always retrieve .eds file from the QuantStudio™.

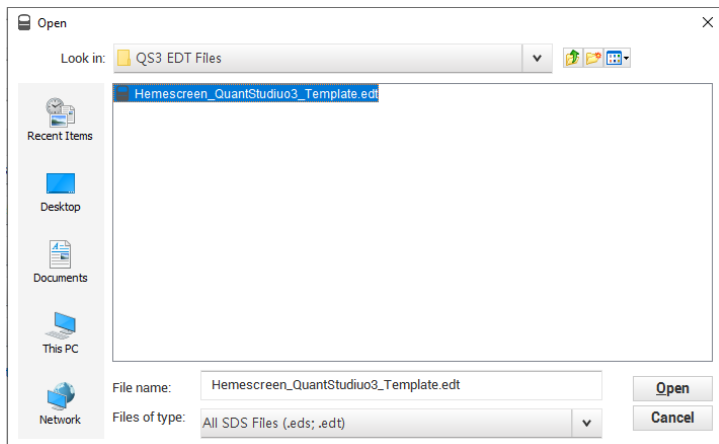
**TIP:** At this stage PCR/HRM products can be stored at less than or equal to -20 °C for up to one week.

**Figure 3: Create a new experiment from Template.**



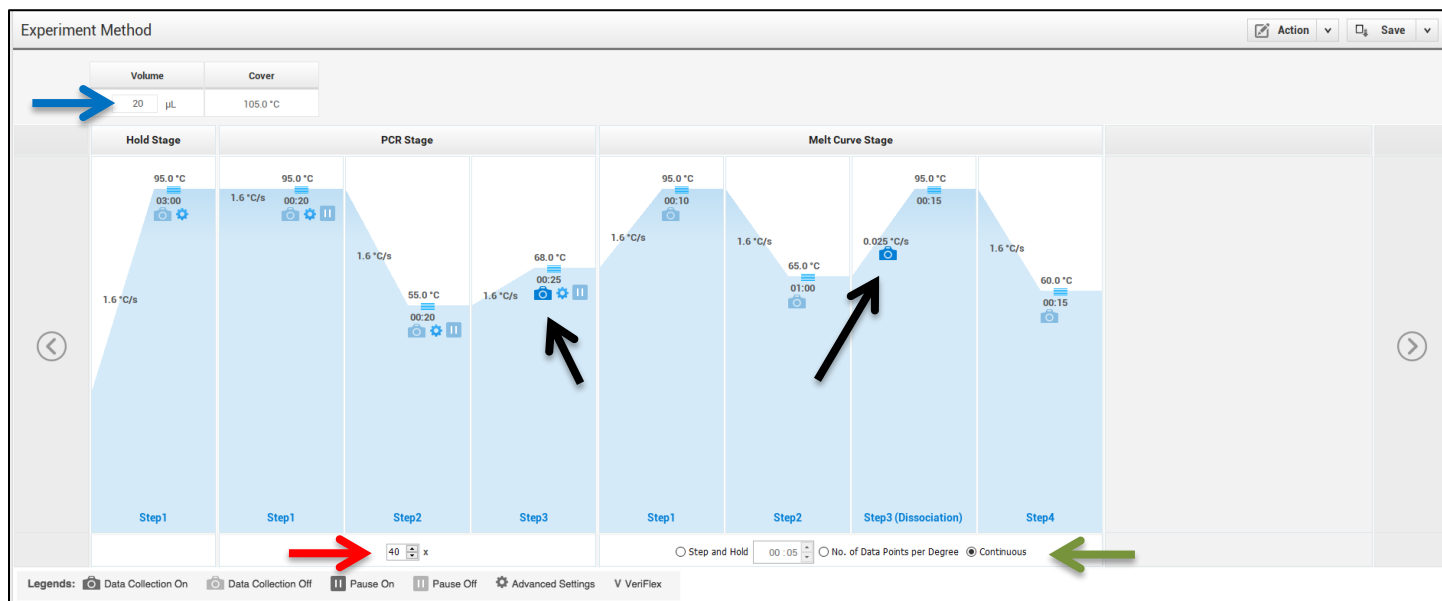
## Instructions for Use

**Figure 4: HemeScreen® QuantStudio™ Template.**



**Figure 5: HRM thermal cycler conditions.**

Make sure reaction volume is 20  $\mu$ L (blue arrow), data collection points are selected in step 2 of PCR stage and step 3 of Melt curve stage (black arrows). Make sure PCR stage has 40 cycles (red arrow) entered and “continuous” is checked (green arrow).

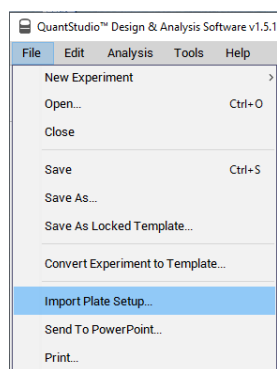


## Instructions for Use

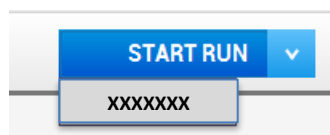
**Table 1: Thermal cycling and melt curve program for the HRM reaction.**

Stage	Step	Temp	Time	Ramp rate
Holding	Enzyme activation	95°C	3 min	1.6 °C/Sec
	Denature	95°C	20 sec	1.6 °C/Sec
Cycling (40 cycles)	Primer Annealing	55°C	20 sec	1.6 °C/Sec
	Extension (Data Capture on)	68°C	25 sec	1.6 °C/Sec
	Denature	95°C	10 sec	1.6 °C/Sec
Melt curve/Dissociation	Anneal	65°C	1 min	1.6 °C/Sec
	High resolution melting (Data Capture on)	95°C	15 sec	0.025 °C/Sec
	Anneal	60°C	15 sec	1.6 °C/Sec

**Figure 6: Import Plate Layout files.**



**Figure 7: Starting the run.**



## Quality Control of the Amplification Data

**NOTE:** This guide is written specific to the QuantStudio™ 3 Real-Time PCR System. If you are using a similar system, please refer to that system’s user guide for guidance.

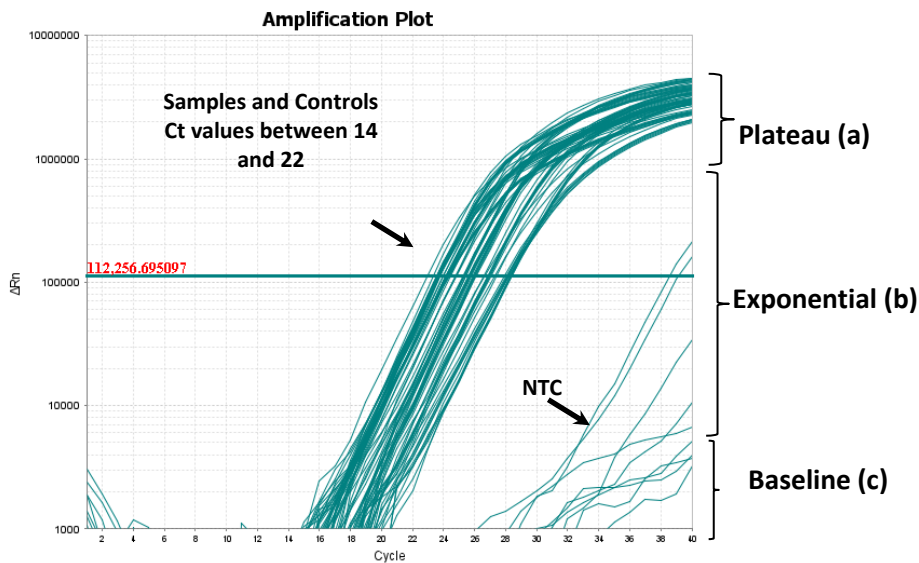
### 2.1. Normal characteristics of HemeScreen® Amplification

- 2.1.1. Review the amplification data in QuantStudio™ Design & Analysis Software v1.5.1.
- 2.1.2. General QC metrics from the Real-Time PCR amplification are as follows; however, results may vary due to instrument to instrument variation, PCR setup, etc. See [Figure 8](#) for an example amplification plot.
  - 2.1.2.1. Genomic DNA typically amplifies between 14 - 22 cycles ( $C_t$ ) when 20 ng of quality DNA is added to the PCR. An exponential increase in fluorescence is expected until the reaction reaches plateau.
  - 2.1.2.2. Plasmid control DNA typically amplifies between 14 - 22 cycles ( $C_t$ ) when controls are used as directed. An exponential increase in fluorescence is expected until the reaction reaches plateau.
  - 2.1.2.3. NTC reactions typically have undetermined  $C_t$  values.
    - 2.1.2.3.1. In some instances, primer dimers form during the amplification and give rise to smaller, broader PCR products; however, they have higher  $C_t$  values (>25 cycles) as compared to samples and controls. See [Figure 9](#) for an example.

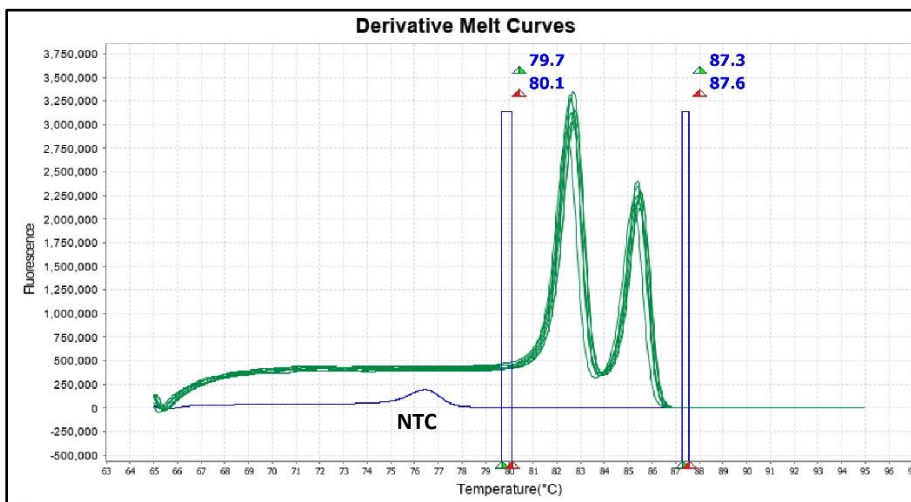
**NOTE:** Document which samples are outliers of the suggested QC metrics. The outliers may produce erroneous HRM results.

- 2.1.3. In the navigation pane, click **Analysis** and then select **Melt Curve**.
- 2.1.4. Verify the Dissociation Curve/Melt Curve shows no unexpected T<sub>m</sub> peaks.
  - 2.1.4.1. Unexpected peaks may indicate contamination, primer dimers, or nonspecific amplification.
  - 2.1.4.2. The data may appear noisy because more data is collected during a high resolution melt curve than during a standard melt curve. The extra data are required for analysis with the High Resolution Melting Software.
  - 2.1.4.3. If the amplified sequence contains more than one variant or a more complex mutation, there may be more than one T<sub>m</sub> peak.
- 2.1.5. Continue to High Resolution Melt Analysis.

**Figure 8: Example Amplification Plot.**



**Figure 9: Example of Non-Specific Amplification in the NTC due to primer dimer formation.**



## HemeScreen® Cytopenia Analysis:

**NOTE:** Six reactions in the Cytopenia Panel contain 2 amplicons each. Each amplicon will require separate analysis. Examples are shown below.

**Table 2: Reactions that contain multiple targets:**

Target(s)	Sample Column	Mutant Control	WT Control	Derivative Peak Temperature 1*	Derivative Peak Temperature 2*
<i>ASXL1</i> Exon 13 codon 591 & <i>ASXL1</i> Exon 13 codon 635	2	G2	H2	<i>ASXL1</i> Exon 12 codon 591 = 85.7 °C	<i>ASXL1</i> Exon 12 codon 635 = 89.5 °C
<i>ASXL1</i> Exon 13 codon 808 & <i>ASXL1</i> Exon 13 codon 693	3	G3	H3	<i>ASXL1</i> Exon 12 codon 808 = 81.7 °C	<i>ASXL1</i> Exon 12 codon 693 = 85.7 °C
<i>RUNX1</i> Exon 5 & <i>RUNX1</i> Exon 6	7	G7	H7	<i>RUNX1</i> Exon 5 = 82.8 °C	<i>RUNX1</i> Exon 6 = 85.6 °C
<i>SF3B1</i> codon 666 & <i>SF3B1</i> codon 700	6	F6	G6	<i>SF3B1</i> codon 666 = 79.5 °C	<i>SF3B1</i> codon 700 = 82.3 °C
<i>SF3B1</i> codon 742 & <i>SF3B1</i> codon 622	9	F9	G9	<i>SF3B1</i> codon 742 = 75.5 °C	<i>SF3B1</i> codon 622 = 80.2 °C
<i>WT1</i> Exon 9 & <i>WT1</i> Exon 7	10	F10	G10	<i>WT1</i> Exon 9 = 82.1 °C	<i>WT1</i> Exon 7 = 85.2 °C

\*Derivative Peak Temperatures are approximate and may differ instrument to instrument.

**NOTE:** The first amplicon mentioned in the **Target** column has the lowest melt temperature in the respective traces.

### 3.1 Analysis

3.1.1. Open High Resolution Melt Software

3.1.2. Click **Open** on the main window and select the result file (\*.eds) saved in the step 1.5.1.8.

3.1.3. HemeScreen® Cytopenia contains 16 targets of interest in ten reactions. Each target of interest must be analyzed one at a time (i.e., *SF3B1* c666-c700 only).

3.1.3.1. To omit samples or NTCs from analysis, select specific samples in the **Plate Layout** tab, and then right-click and choose **Omit**. Omitted samples are indicated by “☒” in the **Plate Layout** Tab. (See [Figure 10](#)).

## Instructions for Use

Figure 10: Example plate layout with omitted NTC reactions.



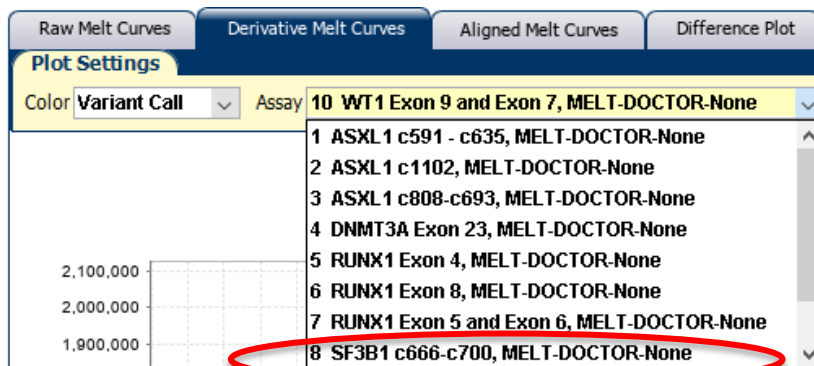
**NOTE:** Omit any outliers and NTCs from further analysis (unless NTCs exhibited possible contamination in previous steps).

### 3.1.4. To analyze wells with a single amplicon:

3.1.4.1. Click the **Derivative Melt Curves** tab in the High Resolution Melt Plots pane.

3.1.4.2. Select the assay name (e.g. "SF3B1 c666-c700") in the Assay dropdown menu (Figure 11). The data for the selected assay will appear in the High Resolution Melt Plots tabs. For example, if "SF3B1 c666-c700" is selected, data from wells A8 through H8 will be displayed.

Figure 11: Assay dropdown menu.



3.1.4.3. Review and adjust the pre-melt and post-melt regions to optimize your separation and variant calls. For most targets, set the pre-melt and post-melt regions as close as possible to the derivative curve peak (see

3.1.4.4. Figure 12).

3.1.4.4.1. If no data appears in the plots, click the green Analyze button and double check that the wells you are analyzing are selected.

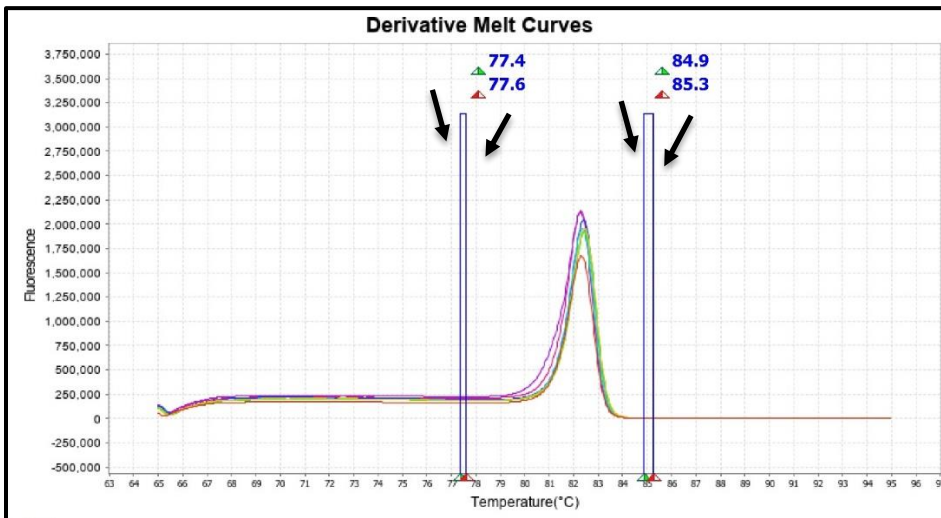


Instructions for Use

- 3.1.4.4.2. The pre-melt and the post-melt Start and Stop temperature lines (black arrows on **Figure 13** should be approximately 0.2 - 0.5 °C apart from each other.
- 3.1.4.5. Click the **Analyze** button on the top right of the main window.
- 3.1.4.6. Navigate to the **Difference Plot** tab to review each sample curve.
- 3.1.4.6.1. Select the reference control (Wild-Type) from the Reference dropdown list (see **Figure 13**).
- 3.1.4.6.2. **Figure 15** shows the Difference Plot that corresponds with **Figure 12**.

**Figure 12: Example Derivative Melt Curves for a reaction with a single target (RUNX1 Exon 8).**

Single target reactions will have one peak. Pre-Melt and Post-Melt Regions are assigned.



**Figure 13: Reference Drop Down Menu.**

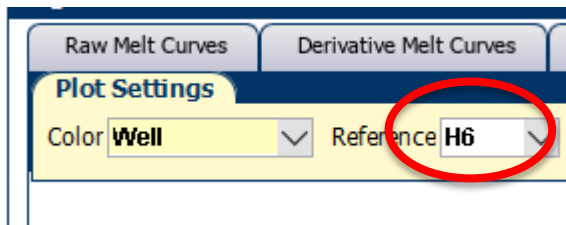
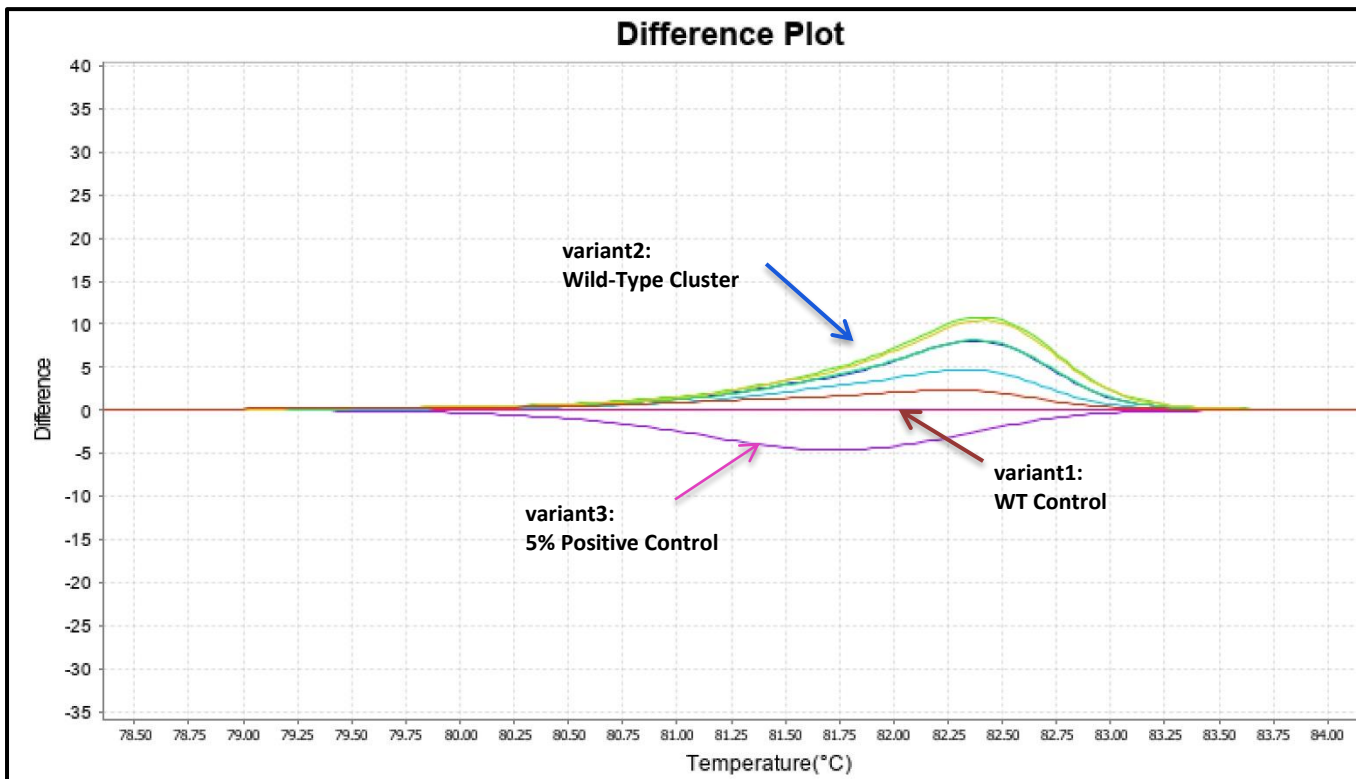




Figure 15: Example Difference Plot.

The Difference Plot shows a Wild-Type sample cluster along with the 5% mutation positive control. In this case the sample replicates are screened NVD. The replicate curves do not align with and exceed the positive reference. They also do not peak at an earlier temperature than the positive control peak.



### 3.1.5. To analyze wells with multiple amplicons:

- 3.1.5.1 Click the **Derivative Melt Curves** tab in the High Resolution Melt Plots pane.
- 3.1.5.2 Select the column containing the gene of interest.
- 3.1.5.3 Manually set the pre-melt and post-melt regions to span a single peak (see [Figure 17](#)).
  - 3.1.5.3.1 Set the pre-melt and post-melt regions as close as possible to the amplicon peak. The melt regions (indicated by the black arrows) should be approximately 0.2 - 0.5 °C apart from each other.
- 3.1.5.4 Click **Analyze** on the top right of the main window to update the results.
- 3.1.5.5 Navigate to the **Difference Plot** tab to review the software's automatic calls.
  - 3.1.5.5.1 Select the reference control (Wild-Type) from the Reference dropdown list.
  - 3.1.5.5.2 [Figure 18](#) is the **Difference Plot** that corresponds with [Figure 17](#).
  - 3.1.5.5.3 In some cases, the automated calls may require further review.
    - 3.1.5.5.3.1 Visually inspect both the Difference Plot and Derivative Melt Curves to verify that no samples exhibit unique melt profiles that may indicate possible variants.
    - 3.1.5.5.3.2 A manual call can be assigned to these samples by highlighting the curve in either the Difference or Derivative Melt Curve plots, right-clicking and selecting Manual Call.

Instructions for Use

Figure 16: Derivative Melt Curve for the *WT1* Exon 9 and *WT1* Exon 7 multiplex reaction.

Reactions that contain two targets will have two peaks. Each of these peaks must be analyzed one at a time by manually setting the melting regions to surround a single peak and then pressing Analyze.

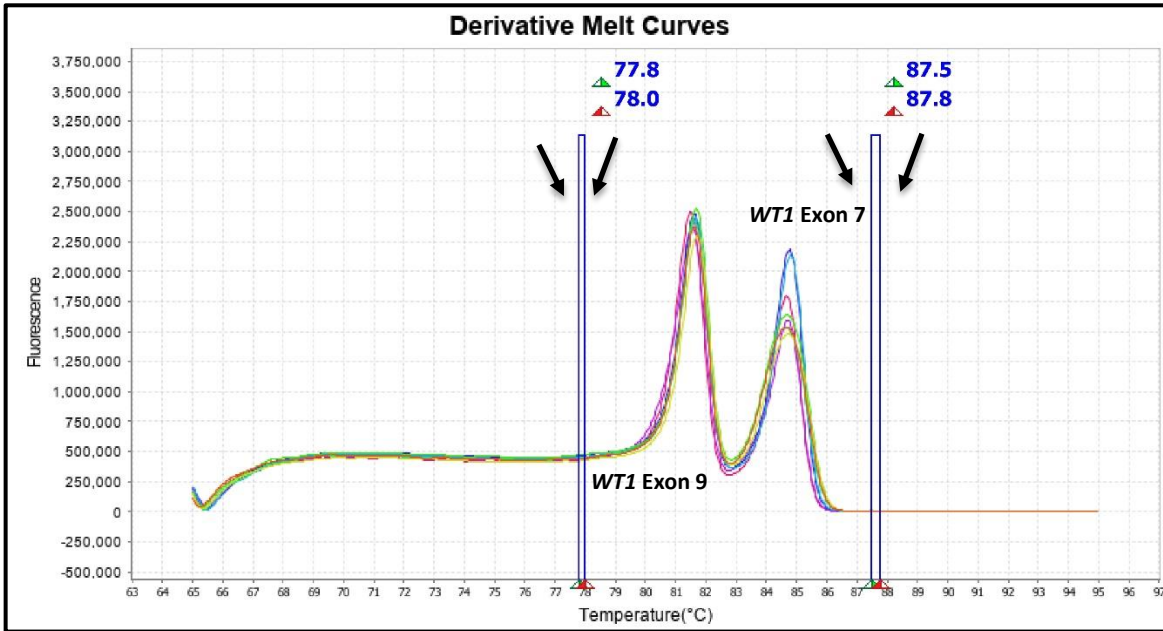
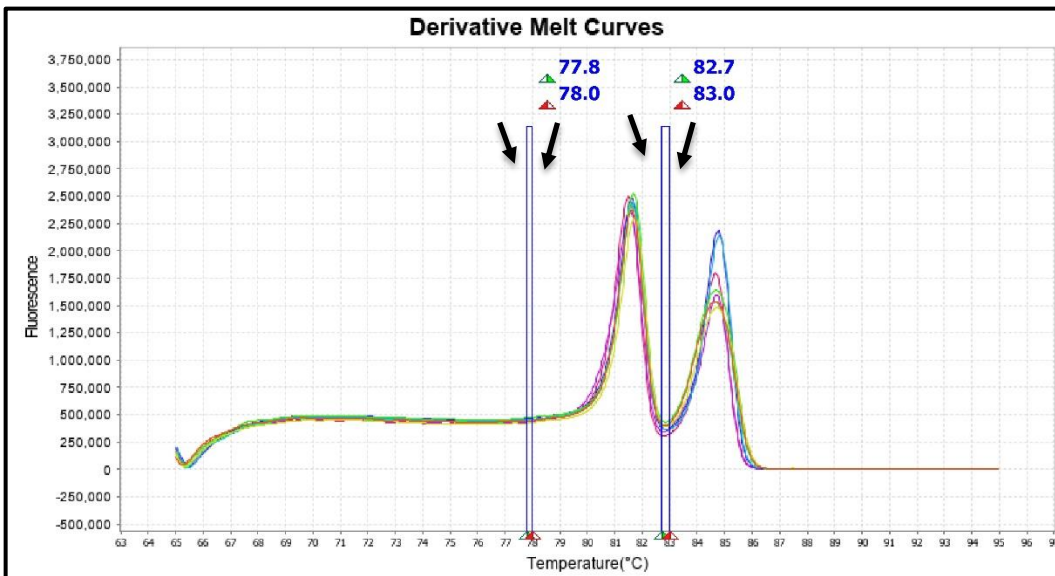


Figure 17: Derivative Melt Curve for the *WT1* Exon 9.

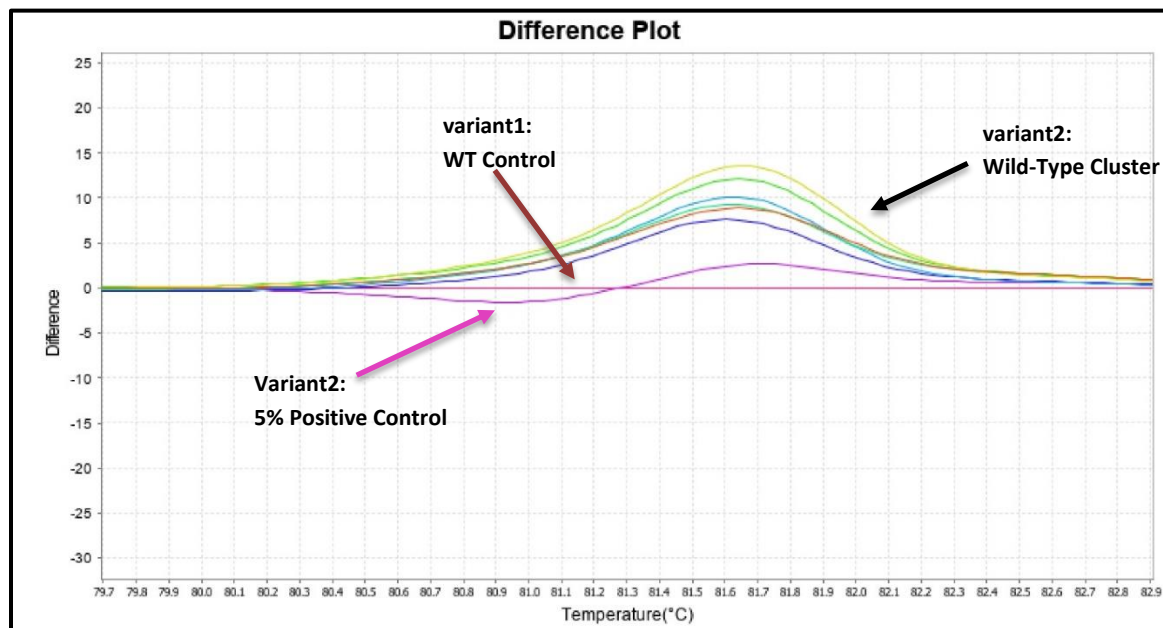
The pre-melt and post-melt regions are set specifically for *WT1* Exon 9 analysis.



## Instructions for Use

**Figure 18: Difference Plot results for *WT1* Exon 9.**

The Difference Plot shows a Wild-Type sample cluster along with the 5% mutation positive control. In this case the sample replicates are screened NVD. The replicate curves do not align with and exceed the positive reference. They also do not peak at an earlier temperature than the positive control peak.



- 3.1.5.6 Next, repeat the process to analyze the second target. In this example the second target is *WT1 Exon 7*
  - 3.1.5.6.1 Navigate to the **Derivative Melt Curve** tab and manually set the pre-melt and post-melt curves to span the second peak as seen in [Figure 19](#).
  - 3.1.5.6.2 Click Analyze on the top right of the main window to update the results.
  - 3.1.5.6.3 Click on the **Difference Plot** tab to view the results.
  - 3.1.5.6.4 Set the reference to the Wild type control.
  - 3.1.5.6.5 See [Figure 20](#) for the **Difference Plot** results using the parameters shown in [Figure 19](#).
  - 3.1.5.6.6 The Wild-Type Control is the flat red line at Difference = 0 in the **Difference Plot**.

Instructions for Use

Figure 19: Derivative Melt Curve for the WT1 Exon 7.

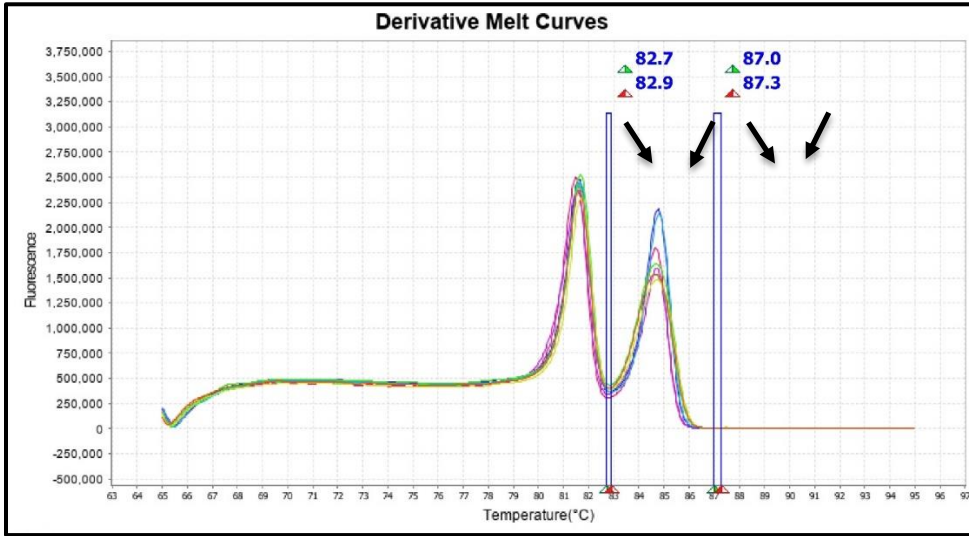
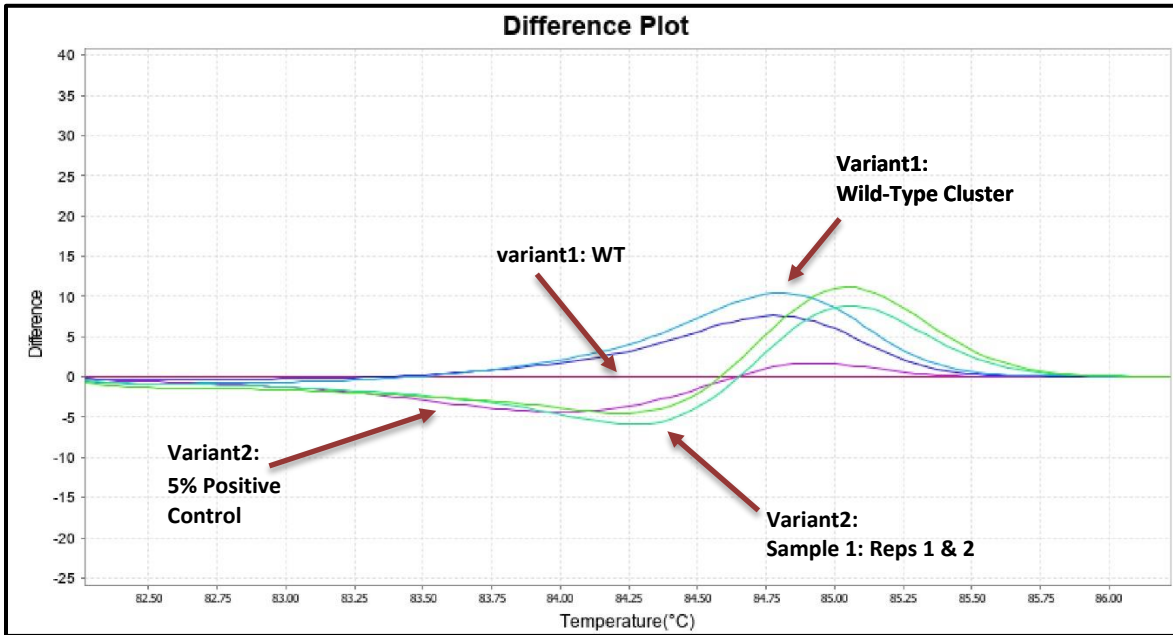


Figure 20: Difference Plot results for WT1 Exon 7.

The Difference Plot shows a Wild-Type reference (pink) is the flat line at Difference = 0. The cluster of samples will screen NVD. The samples in duplicate (light green lines) screen positive, since the melt temperature aligns with that of the 5% control (purple line) and whose difference in fluorescence between the sample curve and the reference curve is greater than that of the 5% control.



3.2 Confirmatory Procedure:

- 3.2.1. Once a specimen has been identified as variant detected (see Figure 18 above), the sample can be reported out or confirmed with a secondary method as desired.
- 3.2.2. If both replicates are NVD, the case is classified as NVD.
- 3.2.3. If both replicates are detected, the case is classified as variant detected.

## Instructions for Use

- 3.2.4. If one of the replicates is not aligned with the positive control melt profile (melting temperature and curve peak) while the other replicate is aligned with the positive control melt profile (melting temperature and curve peak) the same is HRM negative.
- 3.2.5. If the sample melting curve is peaking after the positive control peak in more than 0.5°C then it is considered NVD.

## Troubleshooting












### Plate Errors:

<b>Plate sealing errors</b>	Make sure the plate is sealed completely. Failure to properly seal each well may lead to evaporation or contaminate the sample block which will affect the analysis.
<b>Air bubbles</b>	Remove any air bubbles as possible by flicking or tapping on the wells before running the plate. Centrifuge the plate for 1 min or longer prior to each run.
<b>Dilution errors</b>	If the dilution measures greater or less than 10ng/μl, repeat the dilution. If the problem persists, re-measure the stock solution to ensure accuracy of the dilution numbers.

### Technical Errors:

<b>Cross contamination</b>	To avoid cross contamination, set up HRM reactions in designated pre-PCR areas. Good laboratory practices, especially cleaning the bench and pipettes after reaction setup, are also required to avoid contamination.
<b>NTC contamination</b>	NTC amplification at C <sub>t</sub> values < 34 or the Derivative Melt Curve Peaks align at the same melt temp with the Wild-Type or Mutation controls indicate contamination. Repeat the PCR run for samples and controls for that amplicon.

## Explanation of Symbols and Warnings

			
Caution, consult accompanying documents	<i>In vitro</i> diagnostic medical device	Sterilized using aseptic processing techniques	Keep away from light
			
Use By:	Catalog number	Manufacturer	Batch Code
			
Research Use Only	Consult instructions for use	Temperature Limitation	

Each manufactured lot of HemeScreen® is performance-tested on positive control cell lines to ensure product performance for *in vitro* diagnostic use for this application.

## Instructions for Use

*Each user must make an independent judgment on whether this product is suitable for use in applications conducted in their laboratory. Precipio does not guarantee the successful outcome of any testing based solely on the use of HemeScreen®. Precipio's contribution to these procedures is simply at the step of providing reagents for these procedures.*

## Literature References

1. Gelsi-Boyer, V., Brecqueville, M., Devillier, R. et al. Mutations in ASXL1 are associated with poor prognosis across the spectrum of malignant myeloid diseases. *J Hematol Oncol* 5, 12 (2012). <https://doi.org/10.1186/1756-8722-5-12>
2. Rampal R, Figueroa ME. Wilms tumor 1 mutations in the pathogenesis of acute myeloid leukemia. *Haematologica*. 2016;101(6):672-679. doi:10.3324/haematol.2015.141796
3. Lin ME, Hou HA, Tsai CH, et al. Dynamics of DNMT3A mutation and prognostic relevance in patients with primary myelodysplastic syndrome. *Clin Epigenetics*. 2018;10:42. Published 2018 Apr 2. doi:10.1186/s13148-018-0476-1
4. Susanne Schnittger, Frank Dicker, Wolfgang Kern, Nicole Wendland, Jana Sundermann, Tamara Alpermann, Claudia Haferlach, Torsten Haferlach; RUNX1 mutations are frequent in de novo AML with noncomplex karyotype and confer an unfavorable prognosis. *Blood* 2011; 117 (8): 2348–2357. doi: <https://doi.org/10.1182/blood-2009-11-255976>

## Technical Support/Questions

Technical Support Telephone: +1.203.787.7888 ext. 509

[TechSupport@precipiodx.com](mailto:TechSupport@precipiodx.com)

[www.precipiodx.com](http://www.precipiodx.com)

Precipio, Inc.  
4 Science Park  
New Haven, CT 06511, USA